



GMT MONTHLY MEMBERSHIP PROGRESS REPORT

Results as of: 6/30/2019

Multiple District 39

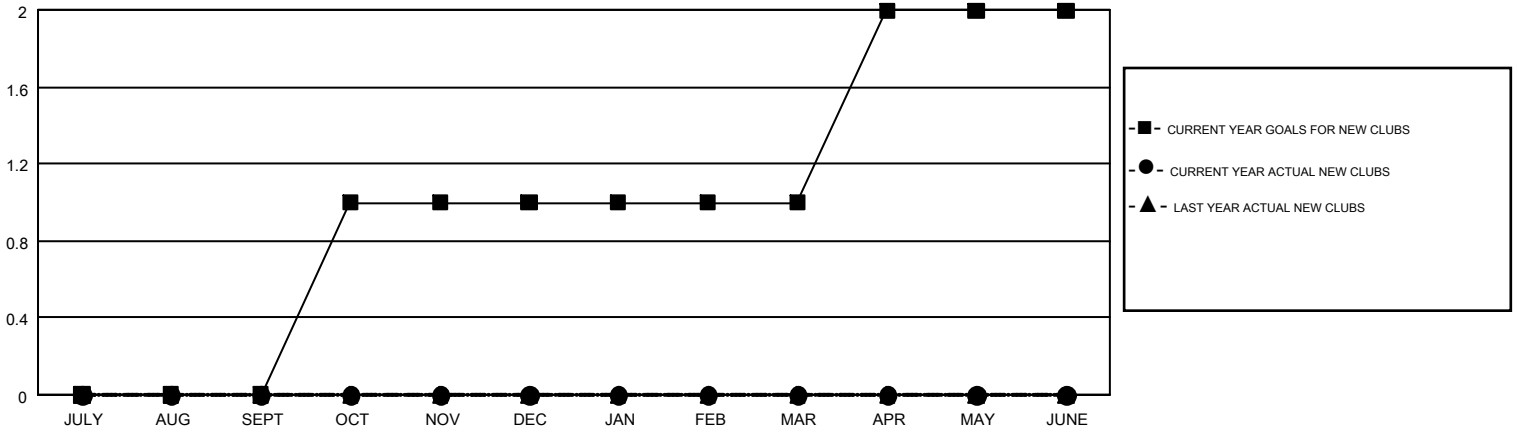
LOCATION: IDAHO

GMT: HOWARD HUDSON

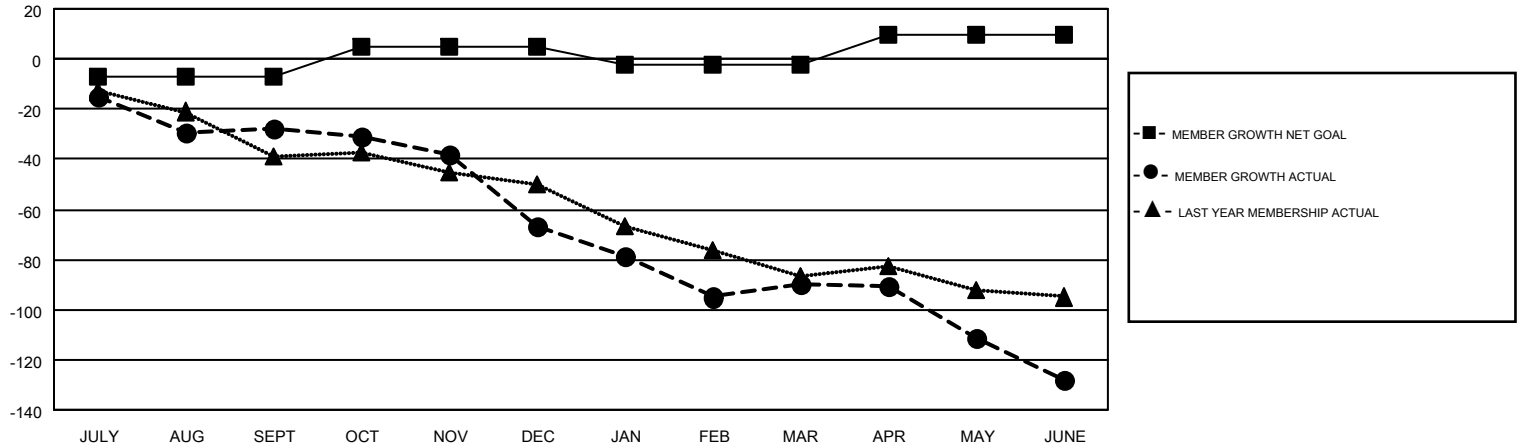
GMT CA 1

Clubs				Members			
RESULTS FOR 2018-2019				RESULTS FOR 2018-2019			
QUARTER	NEW CLUB GOAL	NEW CLUBS	DROPPED CLUBS	QUARTER	MEMBER GROWTH NET GOAL	MEMBER GROWTH ACTUAL	DROPPED MEMBERS ACTUAL (including transfers)
JULY/AUG/SEPT	0	0	1	JULY/AUG/SEPT	-7	26	54
OCT/NOV/DEC	1	0	0	OCT/NOV/DEC	12	15	52
JAN/FEB/MAR	0	0	0	JAN/FEB/MAR	-7	33	49
APR/MAY/JUNE	1	0	1	APR/MAY/JUNE	12	26	58

GOALS AND ACTUAL NEW CLUBS CUMULATIVE



GOALS AND ACTUAL MEMBERS CUMULATIVE



DROPPED CLUBS: 2	33 CLUBS OF 63 ADDED 1 OR MORE NEW MEMBERS	<u>GENDER DISTRIBUTION</u>	
<u>DROPPED MEMBERS</u>		MALE	851 (62.16%)
DECEASED	22	FEMALE	518 (37.84%)
CLUB CANCELLED	2	TOTAL FAMILY UNIT MEMBERS	
OTHER	189	363	
TOTAL	213	FAMILY MEMBERS PAYING HALF DUES	
		188	

[CLICK HERE FOR CUMULATIVE MEMBERSHIP DATA](#)